

Bromley



Bromley College 2012/13 Brochure

Real Skills for the Real World



Bromley College Of F & HE

Tel: 0208 295 7001

CONTENTS



COURSES

- Beauty Therapy 2
- Hairdressing 3
- Travel & Tourism 4
- Motor Vehicle 5
- Science 6
- Sport 7
- Early Years and Childcare 8
- Electrical Installation 9
- Business Studies 10
- Computing and IT 11
- Animal Care 12
- Public Services 13

HELLO AND WELCOME TO BROMLEY COLLEGE

Introduction

This brochure will give you an overview of the great variety of courses we offer and the many ways we can help you achieve your ambitions, whether you're looking for work, planning a career change or aiming for promotion.

Our focus is to provide skills and qualifications for working life— real skills for the real world! Our range of courses means that we offer courses from introductory and immediate levels through to foundation degrees and honors degrees.



Wayne Harrison
Graphic Designer

BEAUTY THERAPY

NVQ Level 1 Beauty Therapy

Our brand new beauty salon provides the perfect place to learn hands-on skills and techniques from experts that you can carry through to your own career. Our new salons opened in September 2009 and are available to staff, students and the general public. This gives our students the opportunity to work with clients in a modern, commercial setting.

General information

This course is designed for study as a full-time programme for students who wish to gain a qualification to enter the Beauty Therapy Industry.

Teaching and assessment

All Beauty Therapy programmes are assessed through a combination of the following: observation of practical assessments on peers and clients, projects & assignments, written & oral questions. The building a portfolio of evidence to be

submitted for assessment at the completion of the programme. Classroom sessions are used to deliver the theory and anatomy & physiology required for the qualification. Students follow work books to cover the main areas of the qualification, written assignments to cover the core units and written papers for practical units. Practical sessions involve training and practice on other students within the group, moving on to clients working in a realistic working environment.



HAIRDRESSING

NVQ Level 2 Hairdressing

Our new salon opened in September 2009 and gives students the chance to work with clients in a real, commercial environment. We offer courses at all levels, from beginners to those wanting to develop specialist skills.

General information

This is a two year course designed for study as a full-time programme aimed specifically at school leavers and those wishing to pursue salon employment in the Hairdressing industry. In addition, it is also suitable for hairdressers wishing to update their qualifications & gain recognition for skills they already perform.

Teaching and assessment

All Hairdressing programmes are assessed through a combination the following : Observation of Practical work on Clients for all units, Project, Assignment and Case Studies. On-line tests and oral questioning, Work Place Assessment and building a 'Portfolio of Evidence' to be submitted for assessment at the completion of the programme, or an individual unit, as negotiated with your tutor.



TRAVEL & TOURISM

BTEC Level 3 Subsidiary Diploma in Travel

The travel and tourism industry offers a huge range of job opportunities in different areas of expertise. We can offer courses at level one and level two in travel and tourism which will provide an insight into the tourism industry and provide you with the skills you need to secure employment.

General information

The qualification will equip you with the knowledge and skills needed to consider a successful career in the tourism industry, or higher education. The course is designed to be adaptable to your needs, interests and consists of four compulsory core units plus a choice of two units from a variety of specialist areas (which totals 360 guided learning hours). The course allows you to

focus on what interests you within the industry, for example: the European market and long-haul travel destinations or retail and business operations. Please note that the units studied may vary to meet local or learner needs.

Teaching and assessment

The work is assessed through assignments with no exams. You have the opportunity to work towards Pass, Merit and Distinction grades.



MOTOR VEHICLE

Advanced Apprenticeship in Motor Vehicle Maintenance & Repair

Bromley College has been a leading provider of training for the motor industry for many years. In 2009 we moved into our new custom designed workshop facilities.

Regular updating, with support from major manufacturers such as BMW, Ford and Land Rover means that you work on the latest vehicles and systems using the latest test equipment.

General information

The motor vehicle advanced apprenticeship is available for learners aged from 16-65 who are employed in the retail motor industry and who have previously completed the level 2 apprenticeship. College attendance is on a day-release basis and assessment will take place in the workplace. Learners are required to build a portfolio of evidence to prove their skills, understanding and knowledge of the subject.



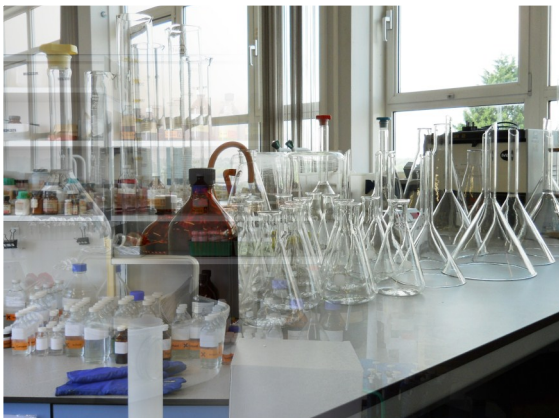
Teaching and assessment

Evidence must be provided of ability to successfully perform a series of practical tasks throughout the course. The evidence can be collected at work, or by way of the realistic working environment at college. The teaching strategies suit a wide range of learning styles - they include ILT (Information learning technology), classroom based delivery, practical tasks, simulated I.L.T. and workshop tasks.

SCIENCE

Foundation Degree: Medical Sciences

We're proud of our strong reputation for the quality of our science teaching. If you are interested in academic studies, our partnership with the University of Greenwich allows you to progress through first degree to postgraduate level. These qualifications will also help you if you are hoping to work in the field of science or are already employed and looking for promotion.



General information

This programme is designed to facilitate the progression of individuals working in hospital pathology laboratories and related disciplines. It is anticipated that students will achieve this qualification after two years of part-time study. Credits are awarded for activities carried out at the workplace as well as at College.

Teaching and assessment

Assessment methods are varied and include practical work, assignments, essays, presentations, short tests and examinations.

SPORTS

BTEC National Diploma in Sports (Performance & Excellence) Football, Rugby or Netball

With the Olympics coming to London in 2012, there will be many opportunities to work in the sport and leisure industries. We offer a range of programmes including sports performance, exercise and fitness and sport science. Our courses offer a combination of practical and theoretical study, whatever your level and interest in sport, whether you are an aspiring athlete, coach, sports scientist or gym instructor we offer courses for the complete beginner upwards.

General information

This National Diploma in Sport follows the Performance and Excellence pathway and incorporates a practical rugby or netball coaching programme. Potential students must demonstrate self motivation, enthusiasm and a genuine commitment to improve their academic and practical skills.



Teaching and assessment

Students will be assessed using a variety of assessment methods including completion of assignments, completion of training diaries and observation of practical skills. Students will experience a variety of teaching and learning strategies.

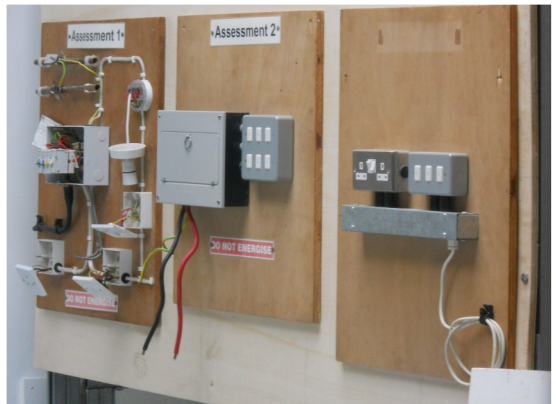
ELECTRICAL INSTALLATION

Advanced Apprenticeship in Electrical Installation

Electricians are always in demand! Whether you want to work as a domestic contractor or in the construction industry, our courses are specially designed to meet the needs of employers and also provide a base for progression to higher education.

General information

The electrical installation advanced apprenticeship is available for learners aged from 16-65 who are employed in the electrical industry for a minimum of 16 hours a week. College attendance is on a day-release basis and assessment will take place in the workplace. Learners are required to build a portfolio of evidence to demonstrate their skills, understanding and knowledge of the subject. Training is provided through workshop sessions, tutorials and classroom teaching. On successful completion of this programme, learners will be classified as fully-skilled electricians. Bromley College is a CITB approved provider.



Entry requirements

Entry to the apprenticeship programme will then be at the tutor's discretion. A minimum of 4 GCSE's including maths and English is also required.

BUSINESS STUDIES

Foundation Degree: Business and Management

In a competitive business world, it helps to have solid qualifications behind you - you will learn about the main aspects of business, including finance, human resources and marketing. We offer courses from level one through to degree/HND in partnership with the University of Greenwich.

General information

This is a two year business degree aimed at people who are already employed and who want to gain a business management qualification whilst working. It is delivered over 2 evenings each week and some Saturdays.

There is an option to progress the qualification to BA Honours level through a top-up programme at the University of Greenwich.

Teaching and assessment

Assessment will be linked to units and assignments in the form of presentations, reports, studies and time constrained assessments. In addition, the Work Based Project is done in the student's workplace and reflects the theory and learning from the classroom based sessions.



COMPUTING & ICT

BTEC National Diploma in Media Production (Interactive Media)

We live in a digital age, and the world of computing and IT moves fast. We offer a range of courses that lead to nationally recognised qualifications that will help you build you career. Study IT for work, software design, website design, programming, networking or digital media - we offer full-time, part-time and a wide range of short courses for specific software packages.

General information

This two year full-time course in Information Technology is designed for students who have a flair for studies in computing and IT. The course will provide the students with knowledge in video editing, web graphics, digital film making, 3D animation video and sound in media.



Teaching and assessment

Assessment decisions are subject to external verification through the National Standards Sampling process. Assessment is through individual units; there is no holistic assessment for this qualification.

ANIMAL CARE

BTEC Introductory Diploma in Animal Care

One of the fastest growing departments at College, Animal Care is home to a huge range of animals and reptiles, to give you hands-on experience and skills to match what you will learn in the classroom. We offer a range of courses that will take you from basic skills to progress through three levels to a degree in animal science, zoology or animal behaviour.

General information

This is a 360 hour per year, vocational course offering an introduction to learning about the animal care and land sector. The content covers a wide range of topics allowing the learner to investigate those related to training, the working environment and related educational subjects on animal care.



Teaching and assessment

The course is a full time post which requires 14 hours per week contact. The timetable is such, that the students are required to commit to their studies outside of the classes and complete assignments for homework.

PUBLIC SERVICE

BTEC First Diploma in Public Services

If you are planning a career in the public services our courses are ideal for you. Whether you would like a career in the armed forces, emergency services or any other public service our courses will equip you with the skills and qualities you need to succeed at the highest level.

General information

The BTEC First Diploma in Public Services is a one year course and is designed to give students the opportunity to gain a realistic idea of what a career in the Public Services can offer. If you are thinking of a career in a Government organisation or any of the Public Services this course may be the one for you. Students will have the opportunity to visit a variety of Public Services and will also gain knowledge of the industry from a wide range of speakers.



Teaching and assessment

This course is assessed through course work and internal verification assignment (IVA), continual internal assessments throughout the year and a number of assignments both written and practical. Students are required to complete a portfolio (file) containing evidence of assignments, practical performance, presentations, group exercises and discussions.



Designed by Wayne Harrison